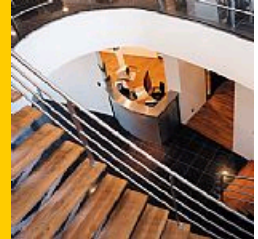




# CMB-P108V-GB1

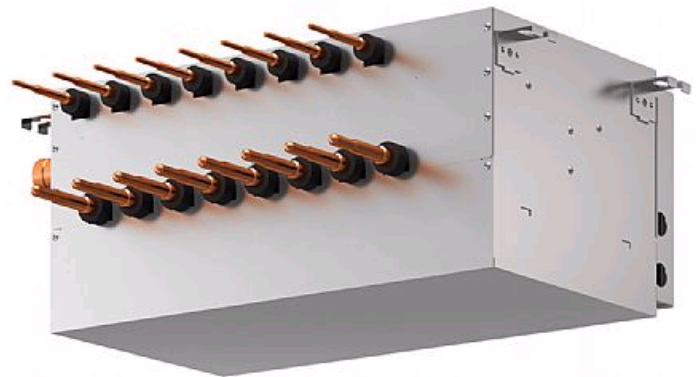
Slave BC Controller

R410A



At the heart of both the R2 and WR2 Series, the BC Controller makes simultaneous heating and cooling possible. It has the inherent 'intelligence' to be the system's decision-maker.

- **New brazed connections**
- **Transfers energy around the system, drawing on energy from the heat source units/outdoor units**
- **Directing energy as requested by the individual indoor units**
- **Instructs the heat source unit/outdoor unit on the amount of refrigerant (liquid or gas) that is required to achieve the requested cooling or heating requirements**
- **Allows unique 2-pipe heat recovery**
- **HIC Circuit for improved efficiency**



Pictures not to scale

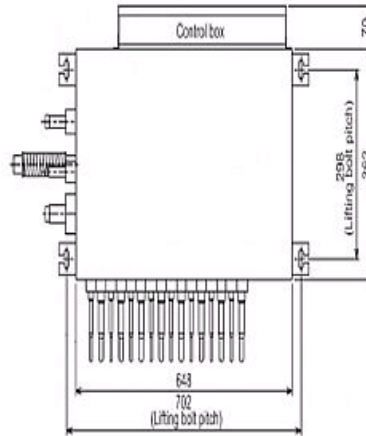
## Product Details

CMB-P108V-GB1	
Number of Connections	8
Power Input (kW) Heating (Nominal)	0.151
Power Input (kW) Cooling (Nominal)	0.151
Width - mm	648
Depth - mm	432
Height - mm	284
Weight - kg	32
Electrical Supply	220-240v, 50Hz
Phase	Single
Mains Cable No. Cores	3
Running Current (A) - Heating	0.63
Running Current (A) - Cooling	0.63
Fuse Rating (BS88) - HRC (A)	6

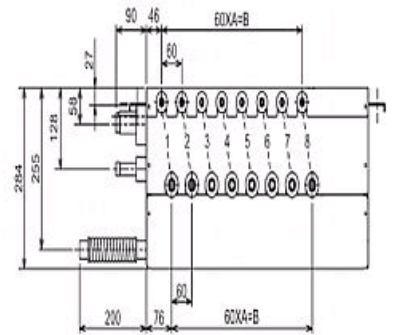
## Dimensions

CMB-P108V-GB1

Upper View >



Side View >



	A	B
CMB-P104V-GB1	3	180
CMB-P108V-GB1	7	420



Telephone: 01707 282880

Email: [air.conditioning@meuk.mee.com](mailto:air.conditioning@meuk.mee.com) Website: <http://www.mitsubishielectric.co.uk/aircon>

Mitsubishi Electric reserves the right to make any variation in technical specification to the equipment described, or to withdraw or replace products without prior notification or public announcement.

Tel:  
Fax:

